
Center for Global Health



NIH Seeks Responses on Promoting Equity in Global Health Research

The National Institutes of Health (NIH) have released a Request for Information on Promoting Equity in Global Health Research. Respondents are invited to provide input regarding current NIH practices that might be revised or new practices that could be implemented to enhance collaborative international research equity and the generation of mutual benefits and shared leadership; and to propose practical ideas that could help NIH enhance these practices.

Respond by August 1 >



Congratulations to Global Health Track Residents

Indiana University (IU) School of Medicine residents completing the requirements for the interdisciplinary Global Health Residency Track received certificates of completion from the IU Center for Global Health this spring. The Track welcomes residents from a variety of specialties. Mentor physicians lead the residents to better understanding of the social, economic, cultural and environmental factors that contribute to health and diseases throughout the world.

[Read more](#) >



INDIANA UNIVERSITY National HIV Conference

Stepping Into the 5th Decade—
Evolving Our Response to HIV

IU National Conference United Around Ending HIV

The IU National HIV Conference brought together hundreds of attendees to share information and unite around the goal of ending the HIV epidemic by 2030. In addition to workshops and networking opportunities, the four-day conference provided free HIV testing and resources to empower community members with knowledge and help keep them and others safe.

[Read about the conference](#) >



IU Center for Global Health Career Opportunities Available

Come work with us as we develop mutually beneficial partnerships across disciplines, schools and countries for the primary purpose of creating and implementing sustainable programs that improve health and human flourishing in underserved areas worldwide.

We are seeking an Associate Director for the IU Center for Global Health as well as a Global Health Finance Director. Details are available by searching "global health" on the IU Jobs website.

[Learn more and apply on the IU Jobs website](#) >



Tickets and Sponsorships Now Available for AMPATH Global Gathering

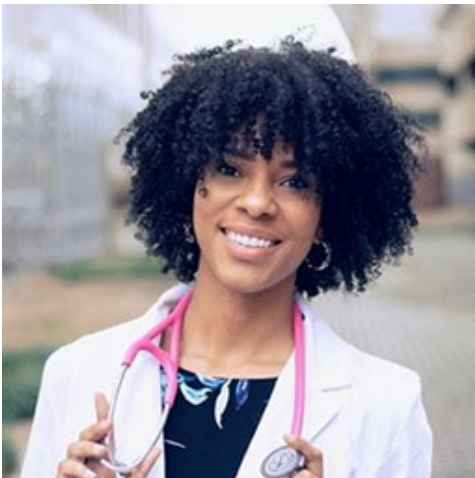
See your friends and make new ones at the AMPATH Global

Gathering in Indianapolis on October 8.

Event and table sponsorships available. Receive recognition for your partnership with AMPATH and secure a table at the AMPATH Global Gathering. Your support brings health to communities in Kenya and around the world.

Support AMPATH by donating items to the event's silent auction. We welcome contributions of unique global handicrafts, jewelry, art, short-term stays at a second or vacation home, in-kind donations of services you can provide or your creative ideas.

[Learn more and purchase tickets](#) >



Resilient IU Medical Resident a Fierce Advocate for Equity and Inclusion

When IU School of Medicine resident physician Kristin Fautleroy-Love, MBBS, MHA, was named “Medical Professional of the Year” at the Galentine’s Day Gala Women in Business Awards Show in Atlanta



Gold Humanism Honor Society Inducts New Members

The IU School of Medicine chapter of the national Arnold P. Gold Foundation Gold Humanism Honor Society recognizes medical students, residents and faculty who demonstrate exemplary behavior that promotes

earlier this year, she didn't have an acceptance speech prepared. She now looks back on that night as the moment she overcame imposter syndrome.

[Learn more on the blog](#) >

humanism in medicine. This year, 45 new members were inducted in May including 2019 Slemenda Scholars Sean Addison Buehler and Michael James Harding. Congratulations to this year's honorees.

[Read more](#) >



Resident Reflects on AMPATH Rotation

Sarah Boudova, MD, PhD, completed a rotation in Eldoret, Kenya with AMPATH in the Spring of 2022 during her 4th year of residency at IU School of Medicine's Department of Obstetrics and Gynecology (OB-GYN). She holds an MD and PhD from the University of Maryland School of Medicine and an MS in chemistry from the University of Pennsylvania.

[Read about her experience](#) >



Mark Your Calendar

July 7 • 8-9 am

**Global Oncology Seminar Series:
Elkanah Omenge Orang'o, MD**

Join via Zoom

August 9 • 12-1 pm

**Global Health Research Speaker Series:
Florence Jaguga, MBChB, MMed**

Join via Zoom

August 23 • 12-1 pm

**Global Health Research Speaker Series:
Violet Naanyu, PhD**

In person and via Zoom

September 13 • 12-1 pm

**Global Health Research Virtual Speaker
Series: Becky Genberg, PhD**

Join via Zoom

October 8 • 5:30 pm

AMPATH Global Gathering

Indianapolis Marriott Downtown

ICYMI

**Global Health Research Virtual Speaker
Series: Mary Sebert, RN, MPH**

Recordings available on demand

Recent Global Health Research Publications including Affiliated Faculty

[A Challenging Knowledge Gap: Estimating Modes of HIV Acquisition Among Adolescents Entering HIV Care During Adolescence.](#)

Humphrey J , Triedman M, Nyandiko W, Sang E, Kemboi E, Alera M, Novitsky V, Manne A, Jepkemboi E, Orido M, Apondi E, Vreeman R, **Wools-Kaloustian K**, Kantor R. Glob Pediatr Health. 2022 May 31;9:2333794X221101768.

[Preferences for Multipurpose Technology and Non-oral Methods of Antiretroviral Therapy Among Women Living With HIV in Western](#)

[Kenya: A Survey Study.](#) Bernard C , Jakait B, Fadel WF, Mocello AR, Onono MA, Bukusi EA, **Wools-Kaloustian KK**, Cohen CR, Patel RC. Front Glob Womens Health. 2022 May 19;3:869623.

["I have never talked to anyone to free my mind" - challenges surrounding status disclosure to adolescents contribute to their disengagement from HIV care: a qualitative study in western Kenya.](#)

Toromo JJ, Apondi E, Nyandiko WM, Omollo M, Bakari S, Aluoch J, Kantor R, **Fortenberry JD**, **Wools-Kaloustian K**, Elul B, Vreeman RC, **Enane LA**. BMC Public Health. 2022 Jun 4;22(1):1122.

[OpenMRS Analytics Engine: A FHIR Based Approach.](#) Kimaina A, Dick J, Sadjad B. Stud Health Technol Inform. 2022 Jun 6;290:314-315.

[A community-based approach to cervical cancer prevention in western Kenya: An AMPATH feasibility project.](#)

Orang'o O, Tonui P, Muthoka K, Kiptoo S, Maina T, Agosa M, **Ermel A**, Tong Y, **Brown D**. SAGE Open Med. 2022 May 23;10:2050312122110211

[Knowledge, attitudes, and practices of pregnant women regarding COVID-19 vaccination in pregnancy in 7 low- and middle-income countries: An observational trial from the Global Network for Women and Children's Health Research.](#)

Naqvi S, Saleem S, Naqvi F, Billah SM, Nielsen E, Fogleman E, Peres-da-Silva N, Figueroa L, Mazariegos M, Garces AL, Patel A, Das P, Kavi A, Goudar SS, Esamai F, Chomba E, Lokangaka A, Tshetu A, Haque R, Siraj S, Yousaf S, Bauserman M, **Liechty**

EA, Krebs NF, Derman RJ, Carlo WA, Petri WA Jr, Hibberd PL, Koso-Thomas M, Thorsten V, McClure EM, Goldenberg RL. BJOG. 2022 May 21. Online ahead of print.

[Predictors of Plasmodium falciparum Infection in the First Trimester Among Nulliparous Women From Kenya, Zambia, and the Democratic Republic of the Congo.](#) Leuba SI, Westreich D, Bose CL, Powers KA, Olshan A, Taylor SM, Tshefu A, Lokangaka A, Carlo WA, Chomba E, **Liechty EA**, **Bucher SL**, Esamai F, Jessani S, Saleem S, Goldenberg RL, Moore J, Nolen T, Hemingway-Foday J, McClure EM, Koso-Thomas M, Derman RJ, Hoffman M, Bauserman M. J Infect Dis. 2022 Jun 1;225(11):2002-2010.

[Impact of oxidative stress on risk of death and readmission in African children with severe malaria: a prospective observational study.](#) Blatt DB, Hanisch B, **Co K**, **Datta D**, **Bond C**, **Opoka RO**, Cusick SE, Michelow IC, **John CC**. J Infect Dis. 2022 Jun 9. Online ahead of print.

[suPAR as a Prognostic Marker of Ugandan Children at Risk of Severe and Fatal Malaria.](#) Stefanova V, Ngai M, Weckman AM, Wright JK, Zhong K, Richard-Greenblatt M, McDonald CR, **Conroy AL**, Namasopo S, Opoka RO, Hawkes M, Kain KC. Clin Infect Dis. 2022 Jun 8:ciac457. doi: 10.1093/cid/ciac457. Online ahead of print.

[Global health electives in the COVID-19 era: resuming travel and strengthening global health academic partnerships.](#) Haq H, Msekandiana A, Matshaba M, Thahane L, Watts J, Tam R, St Clair N, Schubert C, Rule A, Pannaraj P, Pitt M, Oleson D, Murray B, Morris L, Mendoza J, **McHenry M**, Keating E, Ferrer K, Crouse H, Condurache T, Batra M, Barnes A, Conway J. Int J Med Educ. 2022 May 31;13:143-147.

[The leDEA Harmonist Data Toolkit: A Data Quality and Data Sharing Solution for a Global HIV Research Consortium.](#) Lewis JT, Stephens J, **Musick B**, **Brown S**, Malateste K, Ha Dao Ostinelli C, Maxwell N, Jayathilake K, Shi Q, Brazier E, Kariminia A, Hogan B, Duda SN; leDEA. J Biomed Inform. 2022 Jun 6:104110. Online ahead of print.

[Maternal Care and Pregnancy Outcomes of Venezuelan and Colombian Refugees.](#) **Weigel MM**, **Armijos RX**. J Immigr Minor Health. 2022 Jun 6:1-10. Online ahead of print.

[Europeanization of health policy in post-communist European societies: Comparison of six Western Balkan countries.](#) Tresa E, Czabanowska K, Clemens T, Brand H, **Babich SM**, Bjegovic-Mikanovic V, Burazeri G. Health Policy. 2022 May 25:S0168-8510(22)00128-2. Online ahead of print.

[Assessing the effectiveness of a diabetes group visit training for health center staff: a pilot study of five Midwestern community health centers.](#) **Barnes PA** , Barouhas I, Staab EM, Benitez A, Li J, Campbell A, Schaefer CT, Quinn M, Baig AA. BMC Health Serv Res. 2022 Jun 4;22(1):747.

[Disease-economy trade-offs under alternative epidemic control strategies.](#) Ash T, Bento AM, Kaffine D, Rao A, **Bento AI**. Nat Commun. 2022 Jun 9;13(1):3319.

[Trends in Cleft lip and/or Palate Prevalence at Birth in Mexico: A National \(Ecological\) Study Between 2003 and 2019.](#) Cerón-Zamora E, Scougall-Vilchis RJ, Contreras-Bulnes R, González-López BS, Veras-Hernández MA, Lucas-Rincón SE, Escoffié-Ramirez M, Medina-Solís CE, **Maupomé G**. Cleft Palate Craniofac J. 2022 Jun 6. Online ahead of print.

["It's hard!": Adolescents' experience attending school with psychogenic nonepileptic seizures.](#) **Tanner AL, von Gaudecker JR, Buelow JM, Oruche UM, Miller WR** . Epilepsy Behav. 2022 May 28:108724. Online ahead of print.

[Implementation of a pharmacist-led hormonal contraceptive prescribing service in a campus community pharmacy in Indiana, United States.](#) Ahmad ZM, Noel NL, Rudd TM, Nadelson CS, **Ott MA, Wilkinson TA** , Meredith AH. Contraception. 2022 May 14:S0010-7824(22)00133-0. Online ahead of print.

Indiana University affiliation indicated in bold.

and countries for the primary purpose of creating and implementing sustainable programs that improve health and human flourishing in underserved areas worldwide, and preparing a critical mass of health education and health research experts in these communities to become the next generation of local, national and global health leaders. [Adrian Gardner, MD, MPH](#), is director of the Center. Please [send us](#) your ideas for future global health stories.



IUPUI
420 University Blvd.
Indianapolis, IN 46202