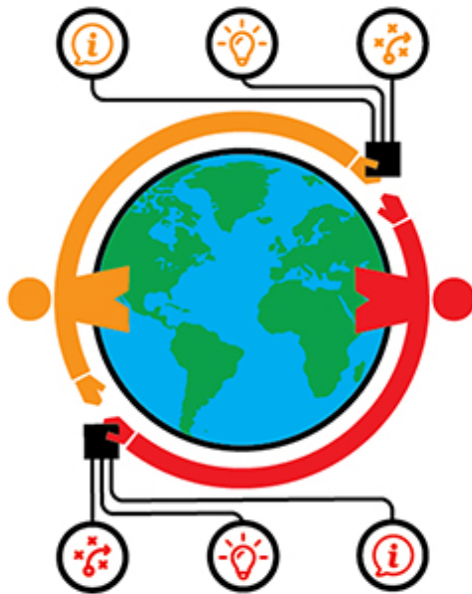


[View online.](#)



September 2021



Hosted by:  **INDIANA CTSI** Clinical and Translational Science Institute  **INDIANA UNIVERSITY CENTER FOR GLOBAL HEALTH**

Reciprocal Innovation Conference Features Dr. Roger Glass

The Indiana CTSI and Indiana University Center for Global Health welcome Roger I. Glass, MD, PhD, director of the Fogarty International Center and associate director for International Research at the National Institutes of Health as the keynote speaker for the 2021 Reciprocal Innovation Stakeholder Meeting. Join your colleagues to discuss the concept of reciprocal innovation and knowledge gained during the COVID-19 pandemic to strengthen health systems. The keynote presentation by Dr. Glass will be followed by an interactive panel of global health leaders on Wednesday, October 13 from 8-10 a.m.

[Register](#)



Dean Lukoye Atwoli Presents Keynote for Midwest Global Health Conference

Indiana University hosts the Midwestern Universities for Global Health conference on October 7 from 9 a.m.-noon. Dean Lukoye Atwoli, MBChB, MMED, PhD, Aga Khan University Medical College, delivers the conference keynote and other sessions include reciprocal innovation, oral poster presentations and partner sessions from midwest CUGH members and their global partners. Poster presentation submissions due September 20.

Women in Global Health-Midwest Chapter Annual Meeting October 7

The Women in Global Health - Midwest Chapter will host their annual meeting featuring several IU faculty members from 12-3 p.m. on October 7 immediately after the MUGH Conference. The Women in Global Health group is an international network aiming to achieve gender equality in global health leadership through advocating for gender transformative leadership.

[Learn more and Register](#)

[Register for Meeting](#)

13th Annual Global Health Conference • Hybrid

Consortium of Universities for Global Health  **CUGH 2022** 

Healthy People, Healthy Planet, Social Justice

For more information: CUGH2022.org

Host Institutions:      

#CUGH2022 @CUGHnews @CUGH_TAC

Los Angeles, California
April 1-3, 2022
Virtual Satellite Sessions: March 21-25, 2022
In-person Satellite Sessions: March 31, 2022

Consortium of Universities for Global Health Annual Conference Slated for April; Panel Proposal Deadline

Extended

The Consortium of Universities for Global Health (CUGH) 2022 Conference takes place virtually and in-person in Los Angeles, California, on April 1-3. The deadline for breakout panel submissions has been extended to October 15 and abstract submissions are due September 23. IU is an institutional member of CUGH whose mission is to support academic institutions and partners to improve the wellbeing of people and the planet through education, research, service, and advocacy.

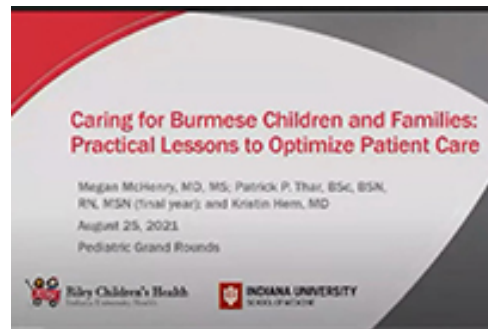
[Conference Information](#)



Student Selected as Slemenda Scholar Aspires for Future in Global Surgery

Cassie Anderson is a second year student at the IU School of Medicine and was one of three students selected by the IU Center for Global Health as Slemenda Scholars in the summer of 2021. Anderson shares how the experience built on her previous research interest and impacted her view of global health.

[Cassie's Reflections](#)



Pediatric Grand Rounds Presentations Focused on Local-Global Health

Recent pediatric grand rounds presentations focused on local-global health topics including Caring for Burmese Children and Families; Cultural Humility Training Model for Healthcare Professionals; and Refugee and Immigrant Children in Marion County. All of the sessions are available on the Pediatric Grand Rounds channel via Kaltura.

[Watch Pediatric Grand Rounds](#)



Global Health Leaders Inspire Slemenda Scholar

Neal Patel is a second year medical student at IU School of Medicine and was also selected as a Slemenda Scholar. Patel shares how this summer's experience was uniquely impacted by COVID-19.

"To me, this summer was a rollercoaster of ups and downs that culminated into an experience that I wouldn't trade for anything else in the world."

[Neal's Reflections](#)

Fogarty Fellowship Applications Open

The application for the Northern/Pacific Global Health (NPGH) Fogarty Fellows and Scholars program for 2022-23 is now available. IU's membership in this research training consortium provides opportunities for IU doctoral and post-doctoral trainees in a variety of health professions to engage in research at international partners sites throughout the world. Postdoctoral trainees from approved sites around the world are also eligible.

[Apply Now](#)

Mark Your Calendars

September 20

Deadline extended for **poster presentations** for the Midwest Universities for Global Health conference on October 7.

September 23

Abstract submission deadline for **Consortium of Universities for Global Health** annual conference April 1-3.

September 28 @ noon

The September **AMPATH Virtual Fireside Chat** features "AMPATH Dermatology—Expanding Care in Western Kenya." Learn how AMPATH dermatology is harnessing the power of technology to expand clinical care across western Kenya.

October 7 @ 9 am-noon

IU hosts the 8th annual **Midwest Universities for Global Health conference** featuring keynote by Dean Lukoye Atwoli, Aga Khan University Medical College, East Africa.

October 7 @ noon-3 p.m.

The **Women in Global Health - Midwest Chapter** will host their annual meeting virtually from 12-3 p.m. featuring several IU faculty members. The Women in Global Health group is an international network aiming to achieve gender equality in global health leadership through advocating for gender transformative leadership.

October 12 @ noon

Michael Scanlon, MPH, assistant director of research at the IU Center for Global Health presents at the October **Global Health Research Speaker Series**.

October 13 @ 8-10 a.m.

Reciprocal Innovation Stakeholder Meeting features keynote speaker Dr. Roger Glass, director of the Fogarty International Center and associate director for International Research at the National Institutes of Health.

October 15

Extended panel submission deadline for **Consortium of Universities for Global Health** annual conference April 1-3.

December 6 @ 5:15 p.m.

IU School of Public Health-Bloomington will honor **Dr. Anthony Fauci** for his work in HIV/AIDS prevention and as a leading expert during the COVID-19 pandemic by naming him the recipient of the school's Ryan White Distinguished Leadership Award. The award will be presented during a virtual fireside chat on Dec. 6 at 5:15 p.m.

ICYMI

Dr. Rachel Umoren, neonatologist at the University of Washington and Seattle Children's Hospital, presented "Virtual Simulation and Telesimulation--Global Health Applications" at the September **Global Health Research Speaker Series**. Dr. Umoren's research focuses on improving neonatal outcomes globally through simulation-based education and global health partnerships. She has published and presented internationally on virtual simulations for health professional education.

All times are ET unless noted. Register or get details for each program by clicking the links in red.

Recent Global Health Research Publications

Feasibility of Rapid Case Ascertainment for Cancer in East Africa: An Investigation of Community-Representative Kaposi Sarcoma in the Era of Antiretroviral Therapy. Semeere A, Byakwaga H, Laker-Oketta M, Freeman E, Busakhala N, Wenger M, Kasozi C, Ssemakadde M, Bwana M, Kanyesigye M, Kadama-Makanga P, Rotich E, Kisuya J, Sang E, **Maurer T, Woolls-**

Kaloustian K, Kambugu A, Martin J. *Cancer Epidemiol.* 2021 Aug 9;74:101997. Online ahead of print.

Pregnancies among women living with HIV using contraceptives and antiretroviral therapy in western Kenya: a retrospective, cohort study. Patel RC, Amorim G, Jakait B, Shepherd BE, Mocello AR, Musick B, Bernard C, Onono M, Bukusi EA, **Wools-Kaloustian K**, Cohen CR, **Yiannoutsos CT**; Implant/Efavirenz Study Group and the East Africa IeDEA Regional Consortium. *BMC Med.* 2021 Aug 13;19(1):178.

Tuberculosis in Adolescents and Young Adults: Emerging Data on TB Transmission and Prevention among Vulnerable Young People. Laycock KM, **Enane LA**, Steenhoff AP. *Trop Med Infect Dis.* 2021 Aug 5;6(3):148.

The Relationship Between Household Microfinance Group Participation and Vaccine Adherence Among Children in Rural Western Kenya. Deyoe JE, Amisi JA, Szkwarko D, Tran DN, Luetke M, Kianersi S, Lee SH, Namae J, Genberg B, Laktabai J, Pastakia S, **Rosenberg M**. *Matern Child Health J.* 2021 Aug 18. Online ahead of print.

eHBB: a randomised controlled trial of virtual reality or video for neonatal resuscitation refresher training in healthcare workers in resource-scarce settings. Umoren R, **Bucher S**, Hippe DS, Ezenwa BN, Fajolu IB, Okwako FM, Feltner J, Nafula M, Musale A, Olawuyi OA, Adeboboye CO, Asangansi I, Paton C, Purkayastha S, Ezeaka CV, Esamai F. *BMJ Open.* 2021 Aug 25;11(8):e048506.

Gender Differences in Insurance, Surgical Admissions and Outcomes at a Kenyan Referral Hospital. Gillio AM, Li HW, **Bhatia MB**, Chepkemoui E, Rutto EJ, **Carpenter KL**, Saruni SI, **Keung CH**, **Hunter-Squires JL**. *J Surg Res.* 2021 Jul 30;268:199-208. Online ahead of print.

Palliative Care Needs in Breast Cancer Patients Entering Inpatient Hospice in Western Kenya. Tarus A, **Cornetta K**, Morogo D, Nyongesa J, Elias H, Boit JM. *J Pain Symptom Manage.* 2021 Jul 29:S0885-3924(21)00465-6. Online ahead of print.

Dietary Inflammatory Index and Cardiometabolic Risk in Ecuadorian Women. Wang Y, Armijos RX, Xun P, **Weigel MM**. *Nutrients.* 2021 Jul 30;13(8):2640.

Evaluation of a First Responders Course in Rural North India. Mohan SC, **Bhatia MB**, Martinez CR, Suria N, Helenowski I, Thakur N, Bhalla A, Narwal R, Bhoi S, Swaroop M. *J Surg Res.* 2021 Aug 23;268:485-490. Online ahead of print.

A systematic review of interventions to reduce HIV-related stigma among primary and secondary school teachers. Martin R, Ashimosi C, Nyandiko W, Chory A, Aluoch J, **Scanlon M**, Vreeman R. *AIDS Care.* 2021 Jul 30:1-6. Online ahead of print.

Career Opportunities

The AMPATH partnership in Kenya has been IU's flagship global health program for more than three decades with a full-time faculty team living and

working alongside Kenyan colleagues and trainees. Is it time for you to join the team of physician leaders advancing AMPATH's mission to "Lead with Care" while supporting bidirectional educational opportunities and groundbreaking research? Learn more about the opportunities currently available:

Executive Field Director (IU)

Surgery Team Leader (IU)

Hematology-Oncology Team Leader (IU)

Internal Medicine Team Leader (IU)

Reproductive Health Team Leader (IU or Univ. of Toronto)

Adolescent Health Team Leader (Mt. Sinai)



[Website](#) | [Donate](#) | [Contact](#)

The IU Center for Global Health develops mutually beneficial partnerships across disciplines, schools and countries for the primary purpose of creating and implementing sustainable programs that improve health and human flourishing in underserved areas worldwide, and preparing a critical mass of health education and health research experts in these communities to become the next generation of local, national and global health leaders. [Adrian Gardner, MD, MPH](#), is director of the Center. Please [send us](#) your ideas for future global health stories.

IU Center for Global Health
702 Rotary Circle, RO 101
Indianapolis, IN 46202