

[View online.](#)



## INDIANA UNIVERSITY CENTER FOR GLOBAL HEALTH

October 2021



### Fogarty Director Explains Importance of Global Health

When a congressman pressed Roger Glass, MD, PhD, about why the U.S. should invest in global health research when there are so many demands for funds at home, his answer was simple: diarrhea.

Dr. Glass, director of the Fogarty International Center at the National Institutes of Health (NIH), drew on one of his early career experiences working in Bangladesh to explain to the congressman that oral rehydration solutions, the combination of salt and sugar now used in the U.S. and around the world to save the lives of children with diarrhea, were developed to treat cholera in Bangladesh. “This was my introduction to reciprocal innovation,” he said during the 2021 Reciprocal Innovation International Stakeholders Meeting, hosted by the Indiana CTSI and Indiana University (IU) Center for Global Health.

---



## Global Health Affiliated Faculty Members Making News

Congratulations to these IU Center for Global Health Affiliated Faculty members for these achievements:

**Priscilla Barnes, PhD**, associate professor in the IU School of Public Health-Bloomington, Department of Applied Health Science, is co-leading an initiative funded by the National Institutes of Health to continue promotion of brain health awareness in African American persons aged 45 years and older.

The IU Melvin and Bren Simon Comprehensive Cancer Center has named **Antwione Haywood, PhD**, its associate director of diversity, equity and inclusion (DEI). Haywood is the first person to hold the chief diversity officer position at the cancer center.

The 2021 IU School of Medicine Outstanding Faculty Commitment to Diversity Award winner is **Ruben Hernandez, MD**, assistant professor of Clinical Family Medicine and vice chair of education for the Department of Family Medicine.

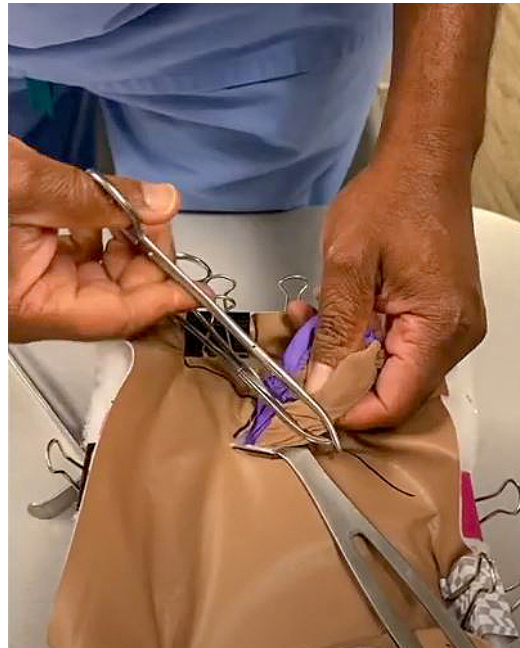
We invite news and updates from other global health affiliated faculty members. The IU Center for Global Health encourages faculty members committed to creating and implementing sustainable programs that improve health and human flourishing in underserved areas worldwide to join the center as affiliated global health faculty. The opportunity is available to all IU faculty members committed to eliminating health disparities both locally and globally.



### **Joe and Sarah Ellen Mamlin Named Indiana Living Legends**

Congratulations to IU School of Medicine Professor Emeritus Joe Mamlin and Sarah Ellen Mamlin who were honored as Indiana Living Legends by the Indiana Historical Society.

Dr. Mamlin is one of four IU physicians who formed a partnership in Kenya with Moi University which later became AMPATH. Mrs. Mamlin was the founder of Sally Test Child Life Program and many other initiatives for women and children in western Kenya. They lived and worked in Kenya for more than two decades.



### **AMPATH Surgery Team Presents Surgical App Model**

The AMPATH surgery team participated in a prototype showcase for the Global Surgical Training Challenge to demonstrate their progress in development of the AMPATH Surgical App (ASAP) to train clinicians who are expected to perform open appendectomies. Each of the teams in the challenge created a video to showcase their training model. Dr. Ivan Seno, consultant general surgeon at Moi Teaching and Referral Hospital and Dr. JoAnna Hunter-Squires, visiting lecturer at Moi University (MU) and general surgeon at IU led the AMPATH presentation on behalf of

Honoring the Mamlins

the educators, surgeons, engineers and residents from both MU and IU who are part of the team.

Read more and watch  
video



## Funding for International Engagement Available

The IUPUI Office of International Affairs has a new round of funding opportunities to support priority areas for internationalization efforts across the IUPUI, IUPUC and IU Fort Wayne campuses. These priority areas include expanding virtual global learning in classrooms, fostering intentional learning spaces for intercultural conversations and advancing the United Nations Sustainable Development Goals. Deadline for Global Impact Research Grants is November 1.

Available Opportunities

## Pediatric HIV Grants Available from CIPHER

The Collaborative Initiative for Paediatric HIV Education and Research (CIPHER) of the International AIDS Society is proud to launch a new round of research grants for mentored early-stage investigators. Early-stage investigators working on pediatric and adolescent HIV, can apply to the CIPHER Grant Programme and become the principal investigator on a research project with a grant of up to \$150,000 over two years. Deadline is October 29.

Apply Now





## Dean Atwoli Shares Global Health Insights

The keynote presentation for the Midwest Universities for Global Health annual conference featured a provocative presentation by Lukoye Atwoli, MMed Psych, MBChB, PhD, discussing “COVID-19, Global Health and the Reification of Poverty.”

“My aim today is to throw out some ideas around the issues that have been exposed by COVID-19 in the area of global health--thinking through some of the inequalities and inequities that have been exposed,” Professor Atwoli began. “The fact that COVID-19 is exposing this is an indictment on how we have designed the global health landscape up to this point.”

[Watch the Presentation](#)



## Medicine in Kenya Information Session November 18

Medicine in Kenya is a 2-month elective in Eldoret, Kenya during which IU School of Medicine Phase 3 students participate in the 30-year AMPATH partnership between IU, Moi University and Moi Teaching and Referral Hospital.

There will be an information meeting Thursday, November 18 from 5-6 p.m.

[More Information](#)

## Fogarty Fellowship Deadline is November 1

The deadline for the Northern/Pacific Global Health Fogarty Fellows and Scholars program for 22-23 is November 1. IU's membership in this research training consortium provides opportunities for IU doctoral and post-doctoral trainees in a variety of health professions to engage in research at international partners sites throughout the world. Postdoctoral trainees from approved sites around the world are also eligible.

[Apply Now](#)





## AMPATH Palliative Care Team Gains National Recognition

The AMPATH palliative care team is a Gold Winner in the Tipping Point Challenge, a national competition focused on the submission of innovative initiatives that have made—or will make—positive, breakthrough change in the care of serious illness. Ken Cornetta, MD, professor of Clinical Medical & Molecular Genetics at IU School of Medicine, leads the palliative care effort with Kenyan and North American colleagues.

The Tipping Point Challenge is sponsored by the Center to Advance Palliative Care and The John A. Hartford Foundation. It was open to all health care organizations, settings, disciplines, and specialties across the US, and over 100 initiatives were submitted. Each was evaluated by an expert panel based on five criteria: impact, evidence-base, feasibility, scalability, and sustainability.

[AMPATH's Palliative Care Entry](#)

---

## Mark Your Calendars

### October 29

Deadline to apply for **Collaborative Initiative for Paediatric HIV Education and Research (CIPHER)** grant.

### October 31

Abstract submission deadline for **Consortium of Universities for Global Health** annual conference April 1-3.

#### **November 1**

Deadline to apply for the 2022-23 cohort of **Fogarty Fellows and Scholars**.

Deadline to apply for **IUPUI Global Impact Research Grants**.

#### **November 4-5**

**Inauguration** of IU President Pamela Whitten.

#### **November 9 @ noon**

Hongmei Nan, MD, PhD, professor and vice chair of the Department of Global Health at Richard M. Fairbanks School of Public Health at IUPUI, presents "Epidemiology in Global Health" at the November **Global Health Research Speaker Series**.

#### **November 17 @ noon**

AMPATH's **November Fireside Chat** features a discussion of AMPATH Surgery past and future.

#### **November 18 @ 5 p.m.**

Information session for **Medicine in Kenya** elective for IU School of Medicine students interested in completing rotations in Kenya.

#### **November 19 @ noon**

**Medicine Grand Rounds** featuring HIV Visiting Professorship with Susan Swindells, MD, from the University of Nebraska.

#### **December 6 @ 5:15 p.m.**

IU School of Public Health-Bloomington will honor **Dr. Anthony Fauci** for his work in HIV/AIDS prevention and as a leading expert during the COVID-19 pandemic by naming him the recipient of the school's Ryan White Distinguished Leadership Award. The award will be presented during a virtual fireside chat on Dec. 6 at 5:15 p.m.

#### **ICYMI**

**Reciprocal Innovation Stakeholder Meeting** keynote presentation by Dr. Roger Glass, director of the Fogarty International Center and associate director for International Research at the National Institutes of Health is available.

Keynote presentation by Dean Lukoye Atwoli, Aga Khan University Medical College, East Africa, for **Midwest Universities for Global Health conference** is also available.

September's **Global Health Research Speaker Series** featuring Michael Scanlon, assistant director of research for the IU Center for Global Health, discussing labor relations and strikes in the Kenyan public health sector and all past speaker events are also available.

All times are ET unless noted. Register or get details for each program by clicking the links in red.



---

# Recent Global Health Research Publications

## **Social, economic, and health effects of the COVID-19 pandemic on adolescents retained in or recently disengaged from HIV care in Kenya.**

**Enane LA**, Apondi E, Aluoch J, **Bakoyannis G**, Lewis Kulzer J, Kwenza Z, Kantor R, Chory A, Gardner A, **Scanlon M**, **Goodrich S**, **Wools-Kaloustian K**, Elul B, Vreeman RC. PLoS One. 2021 Sep 10;16(9):e0257210.

## **'It was hell in the community': a qualitative study of maternal and child health care during health care worker strikes in Kenya.**

**Scanlon ML**, Maldonado LY, Ikemeri JE, Jumah A, Anusu G, Chelagat S, Keter JC, Songok J, **Ruhl LJ**, Christoffersen-Deb A. Int J Equity Health. 2021 Sep 23;20(1):210.

## **A retrospective study of the impact of health worker strikes on maternal and child health care utilization in western Kenya.**

**Scanlon ML**, Maldonado LY, Ikemeri JE, Jumah A, Anusu G, Bone JN, Chelagat S, Keter JC, **Ruhl L**, Songok J, Christoffersen-Deb A. BMC Health Serv Res. 2021 Sep 1;21(1):898.

## **The prevalence and density of asymptomatic Plasmodium falciparum infections among children and adults in three communities of western Kenya.**

**Salgado C**, Ayodo G, **Macklin MD**, Gould MP, **Nallandhighal S**, Odhiambo EO, Obala A, O'Meara WP, **John CC**, **Tran TM**. Malar J. 2021 Sep 17;20(1):371.

## **Association of Care Environment With HIV Incidence and Death Among Orphaned, Separated, and Street-Connected Children and Adolescents in Western Kenya.**

Braitstein P, DeLong A, Ayuku D, **Ott M**, Atwoli L, Galárraga O, Sang E, Hogan J. JAMA Netw Open. 2021 Sep 1;4(9):e2125365.

## **Global HIV mortality trends among children on antiretroviral treatment corrected for under-reported deaths: an updated analysis of the International epidemiology Databases to Evaluate AIDS collaboration.**

Kassanjee R, Johnson LF, Zaniewski E, Ballif M, Christ B, **Yiannoutsos CT**, Nyakato P, Desmonde S, Edmonds A, Sudjaritruk T, Pinto J, Vreeman R, Dahourou DL, Twizere C, Kariminia A, Carlucci JG, Kasozi C, Davies MA; International epidemiology Databases to Evaluate AIDS (IeDEA) Collaboration. J Int AIDS Soc. 2021 Sep;24 Suppl 5(Suppl 5):e25780.

## **Rethinking Global Health Education in Plastic Surgery Residency.**

**Christie BM**, Kurnik NM, Park E, Ranganathan K, Smith AA. Plast Reconstr Surg Glob Open. 2021 Sep 22;9(9):e3775.

## **Neurocognitive outcomes in Malawian children exposed to malaria during pregnancy: An observational birth cohort study.**

Weckman AM, **Conroy AL**, Madanitsa M, Gnanewarman B, McDonald CR, Kalilani-Phiri L, Chandna J, Ali D, Mwapasa V, Khairallah C, Thwai KL, Meshnick SR, Taylor SM, Ter Kuile FO, Kain KC, Gladstone M. PLoS Med. 2021 Sep 28;18(9):e1003701.

## **Achieving consistency in measures of HIV-1 viral suppression across countries: derivation of an adjustment based on international**

**antiretroviral treatment cohort data.** Johnson LF, Kariminia A, Trickey A, Yiannoutsos CT, Ekouevi DK, Minga AK, Pascom ARP, Han WM, Zhang L, Althoff KN, Rebeiro PF, Murenzi G, Ross J, Hsiao NY, Marsh K. J Int AIDS Soc. 2021 Sep;24 Suppl 5(Suppl 5):e25776.

**The role of community health workers in the surgical cascade: a scoping review.** Li HW, Scanlon ML, Kisilu N, Litzelman DK Hum Resour Health. 2021 Oct 3;19(1):122.

**Plasma concentrations of leptin at mid-pregnancy are associated with gestational weight gain among pregnant women in Tanzania: a prospective cohort study.** Wang D, Darling AM, McDonald CR, Perumal N, Liu E, Wang M, Aboud S, Urassa W, Conroy AL, Hayford KT, Liles WC, Kain KC, Fawzi WW. BMC Pregnancy Childbirth. 2021 Oct 6;21(1):675.

**Association of Health Status and Nicotine Consumption with SARS-CoV-2 positivity rates.** Duszynski TJ, Fadel W, Wools-Kaloustian KK, Dixon BE, Yiannoutsos C, Halverson PK, Menachemi N. BMC Public Health. 2021 Oct 3;21(1):1786.

**COVID-19 vaccination intention and vaccine characteristics influencing vaccination acceptance: a global survey of 17 countries.** Wong LP, Alias H, Danaee M, Ahmed J, Lachyan A, Cai CZ, Lin Y, Hu Z, Tan SY, Lu Y, Cai G, Nguyen DK, Seheli FN, Alhammadi F, Madhale MD, Atapattu M, Quazi-Bodhanya T, Mohajer S, Zimet GD, Zhao Q. Infect Dis Poverty. 2021 Oct 7;10(1):122.

---

## Career Opportunities

The AMPATH partnership in Kenya has been IU's flagship global health program for more than three decades with a full-time faculty team living and working alongside Kenyan colleagues and trainees. Is it time for you to join the team of physician leaders advancing AMPATH's mission to "Lead with Care" while supporting bidirectional educational opportunities and groundbreaking research? Learn more about the opportunities currently available:

**Surgery Team Leader (IU)**

**Hematology-Oncology Team Leader (IU)**

**Internal Medicine Team Leader (IU)**

**Reproductive Health Team Leader (IU or Univ. of Toronto)**

**Adolescent Health Team Leader (Mt. Sinai)**



[Website](#) | [Donate](#) | [Contact](#)

The IU Center for Global Health develops mutually beneficial partnerships across disciplines, schools and