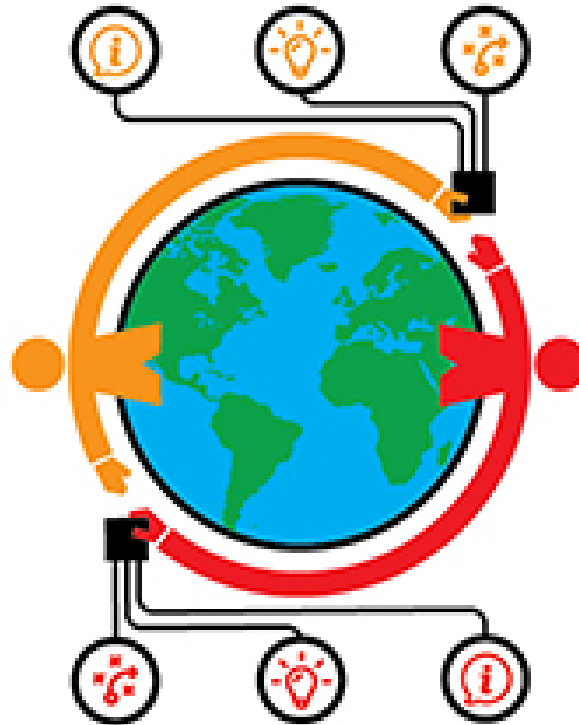

Center for Global Health



Global Health Reciprocal Innovation Grants Awarded to Pediatric Faculty Members

Two collaborations between Indiana University (IU) School of Medicine pediatric faculty members and their colleagues in Kenya received Global Health Reciprocal Innovation grants to implement interventions aimed at improving the lives of both young Hoosiers and young Kenyans.

The grants from the Indiana Clinical and Translational Sciences Institute (CTSI) and the IU Center for Global Health provide \$50,000 for a period of two years to address common priority

areas for global partners and Indiana with innovations that can work in diverse settings around the globe.

[Learn more about the grants](#) >



Manuscript Writing Series Kicks Off on Monday

The AMPATH Professional Development Series will offer a four-session series on manuscript writing beginning on Monday, July 25. The sessions are open to IU investigators. Participants will learn best practices for scientific manuscript writing. Participants are encouraged to either have drafted a preliminary manuscript, written a thorough literature review or compiled and analyzed data for a study. There will be three additional workshops on August 22, September 12, and October 17.

[Register for July 25 session](#) >



Deadline for PRIME Grant Awards Approaching

The IU School of Medicine Primary Care Reaffirmation for Indiana Medical Education (PRIME) program is offering five internal research project awards at up to \$100,000 each. Projects will be in the area of health equity (education or clinical care) and must be completed in an 18-month timeline. Faculty principal investigators must include an investigator who is a medical student or resident on the project. Letter of Intent is due on August 1 and the application deadline is August 15.

[Read about the opportunity](#) >



Slemenda Scholars Visit AMPATH Community Initiatives in Kenya

Marissa Vander Missen is a rising second-year medical student at IU School of Medicine. She is one of three Slemenda Scholars spending the summer in Eldoret, Kenya, with the AMPATH partnership.

"It feels like the time in Eldoret and surrounding areas of Western Kenya has flown by. Feeling at home came easily, surrounded by enthusiastic team members at Moi Teaching and Referral Hospital and welcoming physicians and trainees at IU House--veterans and newbies alike."

[Learn more about the Slemenda experience](#) >



Dr. Oruche Appointed to NIH Study Section

Congratulations to IU Center for Global Health affiliated faculty member Ukamaka Oruche, PhD, RN, PMHCNS-BC, FAAN. Her nomination to the Interdisciplinary Clinical Care in Specialty Care Settings Study Section has been approved by the National Institutes of Health Director. Her term began on July 1.



In Memory: Dr. Rex Stockton

Rex Stockton, Ed.D, MA, Chancellor's Professor Emeritus in the School of Education and a global health affiliated faculty member passed away recently. Dr. Stockton led I-CARE which trains counselors to work with people living with HIV in Botswana for more than two decades. Our condolences to his family, friends and colleagues.



Tickets and Sponsorships Now Available for AMPATH Global Gathering

See your friends and make new ones at the AMPATH Global Gathering in Indianapolis on October 8.

Event and table sponsorships available. Receive recognition for your partnership with AMPATH and secure a table at the AMPATH Global Gathering. Your support brings health to communities in Kenya and around the world.

Support AMPATH by donating items to the event's silent auction. We welcome contributions of unique global handicrafts, jewelry, art, short-term stays at a second or vacation home, in-kind donations of services you can provide or your creative ideas.

[Learn more and purchase tickets](#) >



Regenstrief Institute and IU Receive Funding for Informatics Training Program

Regenstrief Institute and IU have received support from the National Library of Medicine (NLM), part of the National Institutes for Health, for the Indiana Training Program in

Consortium of
Universities
for Global Health



Consortium of Universities for Global Health 2023 Conference Open for Submissions

The Consortium of Universities for Global Health 2023 conference theme is "Global Health at a Crossroads: Equity, Climate Change and Microbial

Public and Population Health Informatics.

The prestigious pre- and post-doctoral fellowship program educates and trains future researchers working on the development and implementation of data and information systems to improve population health.

[Read more about the grant](#) >

Threats." More than 2,000 scientists, students and implementers from academia, NGOs, government and the private sector will present, learn and collaborate to address some of the pressing challenges our world faces April 14-16 in Washington, D.C. The current call for breakout panel submissions and abstract missions is open until September 30, 2022.

[Visit the conference website](#) >

Mark Your Calendar

August 1 Deadline

Fogarty Request for Information - Promoting Equity in Global Health Research

August 4 • 8-9 am

Global Oncology Seminar Series: Toby Maurer, MD

Join via Zoom

August 9 • 12-1 pm

Global Health Research Speaker Series: Florence Jaguga, MBChB, MMed "Implementing a QualityRights Initiative in Kenya"

Join via Zoom

August 23 • 12-1 pm

**Global Health Research Speaker Series:
Violet Naanyu, PhD**

**"The Sweetness of Participants' Stories:
AMPATH Support for Mixed Methods in
Kenya"**

In person at HITS 1110 (410 W 10th St in
Indianapolis)
and via Zoom

September 13 • 12-1 pm

**Global Health Research Virtual Speaker
Series: Becky Genberg, PhD**

Join via Zoom

October 8 • 5:30 pm

AMPATH Global Gathering

Indianapolis Marriott Downtown

Click links to register.

ICYMI

**Global Oncology Seminar
Series: Elkanah Omenge Orang'o**

Recording available on demand.

Recent Global Health Research Publications including Affiliated Faculty

**[Uncovering the Overlap of Global and Domestic Rural Surgery for
Medical Trainees.](#) Bhatia MB, Darkwa L, Simon C, Li HW, Allison H,**

Joplin TS, Meade ZS, Keung C, McDow AD . J Surg Res. 2022 Jul 13;279:442-452.. Online ahead of print.

[**Nurses' roles in caring for themselves to care for the global population.**](#) **Oruche UM**, Agor DC. Arch Psychiatr Nurs. 2022 Aug;39:A1-A2.

[**Evaluation of four chemotherapy regimens for treatment of advanced AIDS-associated Kaposi sarcoma in Kenya: a cost-effectiveness analysis.**](#) Freeman EE, McCann NC, Semeere A, Reddy KP, Laker-Oketta M, Byakwaga H, Pei PP, Hajny Fernandez ME, Kiprono S, Busakhala N, Martin JN, **Maurer T**, Bassett IV, Freedberg KA, Hyle EP. Lancet Glob Health. 2022 Aug;10(8):e1179-e1188.

[**Trends in Cleft lip and/or Palate Prevalence at Birth in Mexico: A National \(Ecological\) Study Between 2003 and 2019.**](#) Cerón-Zamora E, Scougall-Vilchis RJ, Contreras-Bulnes R, González-López BS, Veras-Hernández MA, Lucas-Rincón SE, Escoffié-Ramirez M, Medina-Solís CE, **Maupomé G**. Cleft Palate Craniofac J. 2022 Jun 6:10556656221106881. Online ahead of print.

[**Real-world use and outcomes of dolutegravir-containing antiretroviral therapy in HIV and tuberculosis co-infection: a site survey and cohort study in sub-Saharan Africa.**](#) Romo ML, Brazier E, Mahambou-Nsondé D, De Waal R, Sekaggya-Wiltshire C, Chimbetete C, Muyindike WR, Murenzi G, Kunzekwenyika C, Tiendrebeogo T, Muhairwe JA, Lelo P, Dzudie A, Twizere C, Rafael I, Ezechi OC, Diero L, Yotebieng M, Fenner L, **Wools-Kaloustian KK**, Shah NS, Nash D; International epidemiology Databases to Evaluate AIDS (IeDEA). J Int AIDS Soc. 2022 Jul;25(7):e25961

[**Longitudinal impacts of the COVID-19 pandemic on adolescents living with HIV in New York City.**](#) Posada R, Waldman R, Chory A, Martin R, Cohen A, Chiacchia S, Childs J, **Enane LA**, Vreeman R. AIDS Care. 2022 Jun 27:1-5. Online ahead of print.

[**Barriers and facilitators to chemotherapy initiation and adherence for patients with HIV-associated Kaposi's sarcoma in Kenya: a qualitative study.**](#) McMahan DE, Singh R, Chemtai L, Semeere A, Byakwaga H, Grant M, Laker-Oketta M, Lagat C, Collier S, **Maurer T** , Martin J, Bassett IV, Butler L, Kiprono S, Busakhala N, Freeman EE. Infect Agent Cancer. 2022

Jul 6;17(1):37.

["I bring her up with love:" Perspectives of caregivers of children with neurodevelopmental delays in western Kenya.](#)

Heng YY, Nafiseh A, Oyungu E, Ombitsa AR, Cherop C, **McHenry MS**. Child Care Health Dev. 2022 Jul 11. Online ahead of print.

[What can twins teach us about malaria epidemiology?](#) **John CC**. J

Infect Dis. 2022 Jul 18;jjac297. Online ahead of print.

[Blackwater fever and acute kidney injury in children hospitalized with an acute febrile illness: pathophysiology and prognostic](#)

[significance.](#) **Conroy AL**, Hawkes MT, Leligdowicz A, Mufumba I, **Starr MC**, Zhong K, Namasopo S, **John CC**, Opoka RO, Kain KC. BMC Med. 2022 Jul 1;20(1):221.

[Elevated Plasma Soluble ST2 Levels are Associated With Neuronal Injury and Neurocognitive Impairment in Children With Cerebral](#)

[Malaria.](#) **Fernander EM**, **Adogamhe P**, **Datta D**, **Bond C**, **Zhao Y**, **Bangirana P**, **Conroy AL**, **Opoka RO**, **John CC**. Pathog Immun. 2022 Jun 23;7(1):60-80.

[Immune and endothelial activation markers and risk stratification of childhood pneumonia in Uganda: A secondary analysis of a](#)

[prospective cohort study.](#) McDonald CR, Leligdowicz A, **Conroy AL**, Weckman AM, Richard-Greenblatt M, Ngai M, Erice C, Zhong K, Namasopo S, Opoka RO, Hawkes MT, Kain KC. PLoS Med. 2022 Jul 13;19(7):e1004057. Online ahead of print.

[Building Cancer Control Capacity in Health Professionals Through Telementoring: A Survey Study of a Cancer Prevention and](#)

[Survivorship Care ECHO Program.](#) **Milgrom ZZ**, **Severance TS**, **Scanlon CM**, **Carson AT**, **Janota AD**, **Vik TA**, **Duwve JM**, **Dixon BE**, **Mendonca EA**. Stud Health Technol Inform. 2022 Jun 6;290:1122-1123.

[Europeanization of health policy in post-communist European societies: Comparison of six Western Balkan countries.](#)

Tresa E, Czabanowska K, Clemens T, Brand H, **Babich SM**, Bjegovic-Mikanovic V, Burazeri G. Health Policy. 2022 Aug;126(8):816-823.

[The Diabetes Prevention Gap And Opportunities To Increase Participation In Effective Interventions.](#) Alva ML, Chakkalakal RJ, Moin T, **Galaviz KI**. Health Aff (Millwood). 2022 Jul;41(7):971-979.

Indiana University affiliation indicated in bold.

The IU Center for Global Health develops mutually beneficial partnerships across disciplines, schools and countries for the primary purpose of creating and implementing sustainable programs that improve health and human flourishing in underserved areas worldwide, and preparing a critical mass of health education and health research experts in these communities to become the next generation of local, national and global health leaders. [Adrian Gardner, MD, MPH](#), is director of the Center. Please [send us](#) your ideas for future global health stories.



IUPUI
420 University Blvd.
Indianapolis, IN 46202

[View online](#)